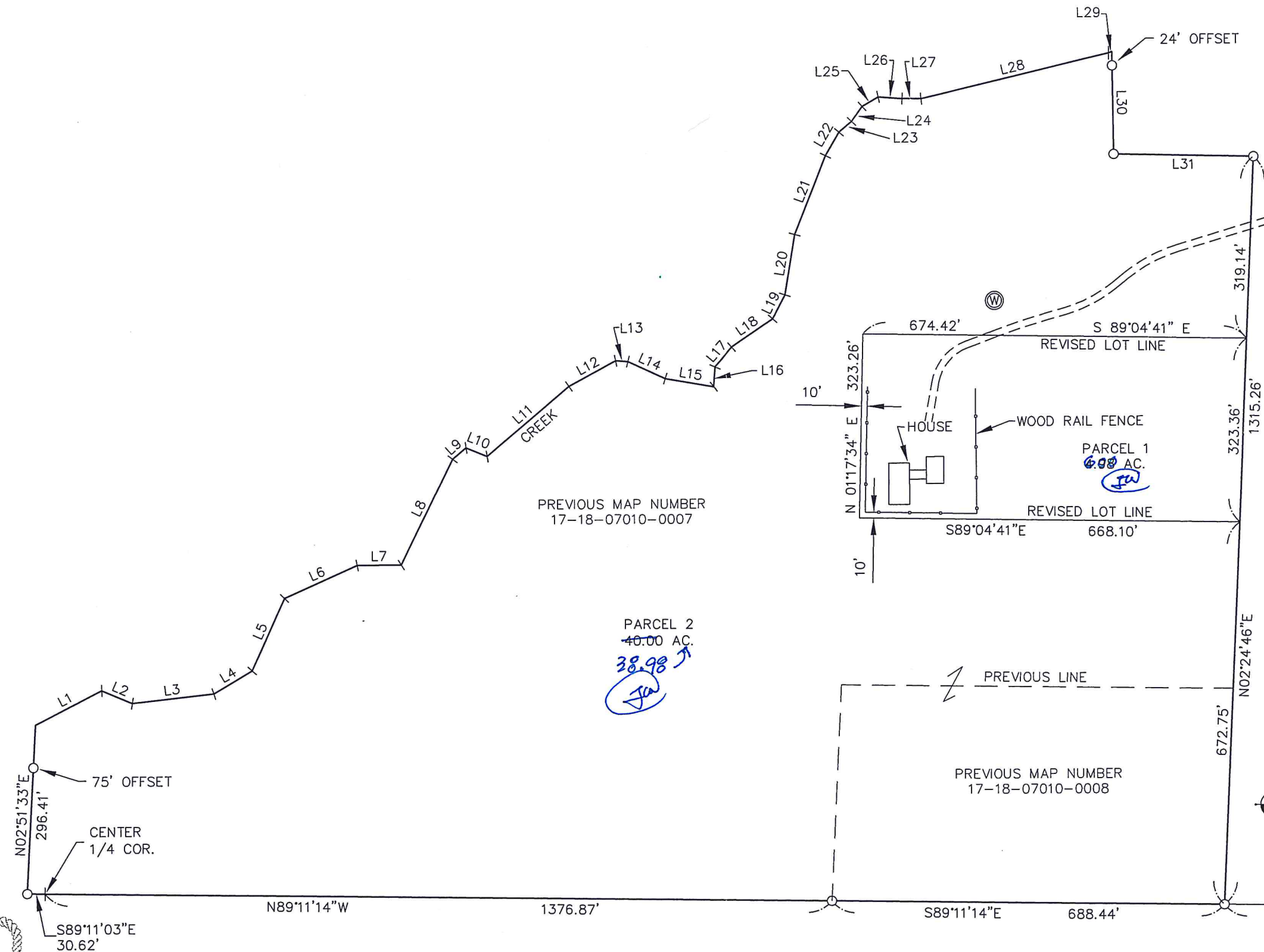


LINE TABLE		
LINE	LENGTH	BEARING
L1	130.53	S62°38'31"W
L2	58.00	N66°52'44"W
L3	143.00	S83°33'23"W
L4	77.88	S59°00'36"W
L5	139.29	S23°56'03"W
L6	139.46	S65°41'39"W
L7	77.19	S89°34'01"W
L8	206.42	S26°06'25"W
L9	30.80	S49°21'55"W
L10	40.00	N67°16'26"W
L11	188.66	S49°31'42"W
L12	93.43	S61°32'24"W
L13	21.72	N86°09'20"W
L14	71.60	N64°58'02"W
L15	86.13	N80°07'46"W
L16	35.00	S04°03'09"W
L17	45.67	S40°51'49"W
L18	86.97	S55°40'24"W
L19	47.34	S27°13'37"W
L20	107.00	S09°24'11"W
L21	148.34	S21°30'35"W
L22	47.19	S29°45'35"W
L23	28.96	S49°49'52"W
L24	32.14	S35°21'24"W
L25	32.62	S59°49'05"W
L26	42.13	N85°56'11"W
L27	33.23	N89°35'54"W
L28	339.45	S76°42'37"W
L29	6.12	S68°29'13"W
L30	178.70	S00°47'46"E
L31	245.44	N88°42'13"W



PARCEL 2
40.00 AC.
38.98
JW

GRAPHIC SCALE

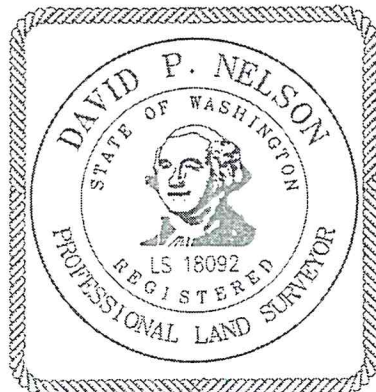
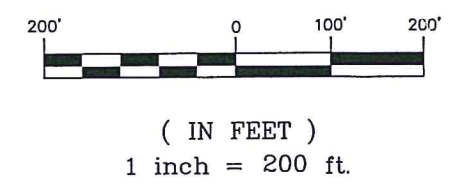


EXHIBIT BOUNDARY LINE ADJUSTMENT	PREPARED FOR RANDEL BURRESS	Encompass <small>ENGINEERING & SURVEYING</small> <small>Western Washington Division 165 NE Juniper Street, Suite 201 • Issaquah, WA 98027 • Phone: (425) 392-0250 • Fax: (425) 391-3055 Eastern Washington Division 108 East 2nd Street • Clallam, WA 98922 • Phone: (509) 674-7433 • Fax: (509) 674-7419</small>	REVISIONS	JOB NO. 13039	1 SHEET
				DATE 06/2013	
				SCALE 1"=200'	